

# MANTIS GIGAS.



## CHARACTER GENERICUS.

*Caput* nutans, maxillosum, palpis instructum.

*Antennæ* setaceæ.

*Alæ* quatuor, membranaceæ, convolutæ : inferiores plicatæ.

*Pedes* antici compressi, subtus ferrato-denticulati, armati ungue solitario et digito setaceo laterali articulado ; *postici* quatuor, læves, gressorii.

*Thorax* linearis, elongatus, angustatus.

*Lin. Syst. Nat.* p. 689.

## CHARACTER SPECIFICUS.

MANTIS thorace teretiufculo, elytris brevissimis, pedibus spinosis.

*Lin. Syst. Nat.* p. 689.

---

Formam magis miram et singularem quam quæ huic insecto est, vix animo possumus concipere. Quod si physicos solos audiremus, nec oculis nostris fides esset, dubitari etiam fortasse posset an tale ullud unquam revera extiterit. In insectis hujus classis, larva, seu animal imperfectum, ab imagine ipsa, seu insecto adulto non multum abludivit, nisi quod alis careat, quarum illi (ut physicorum more loquar) rudimenta tantum sunt.

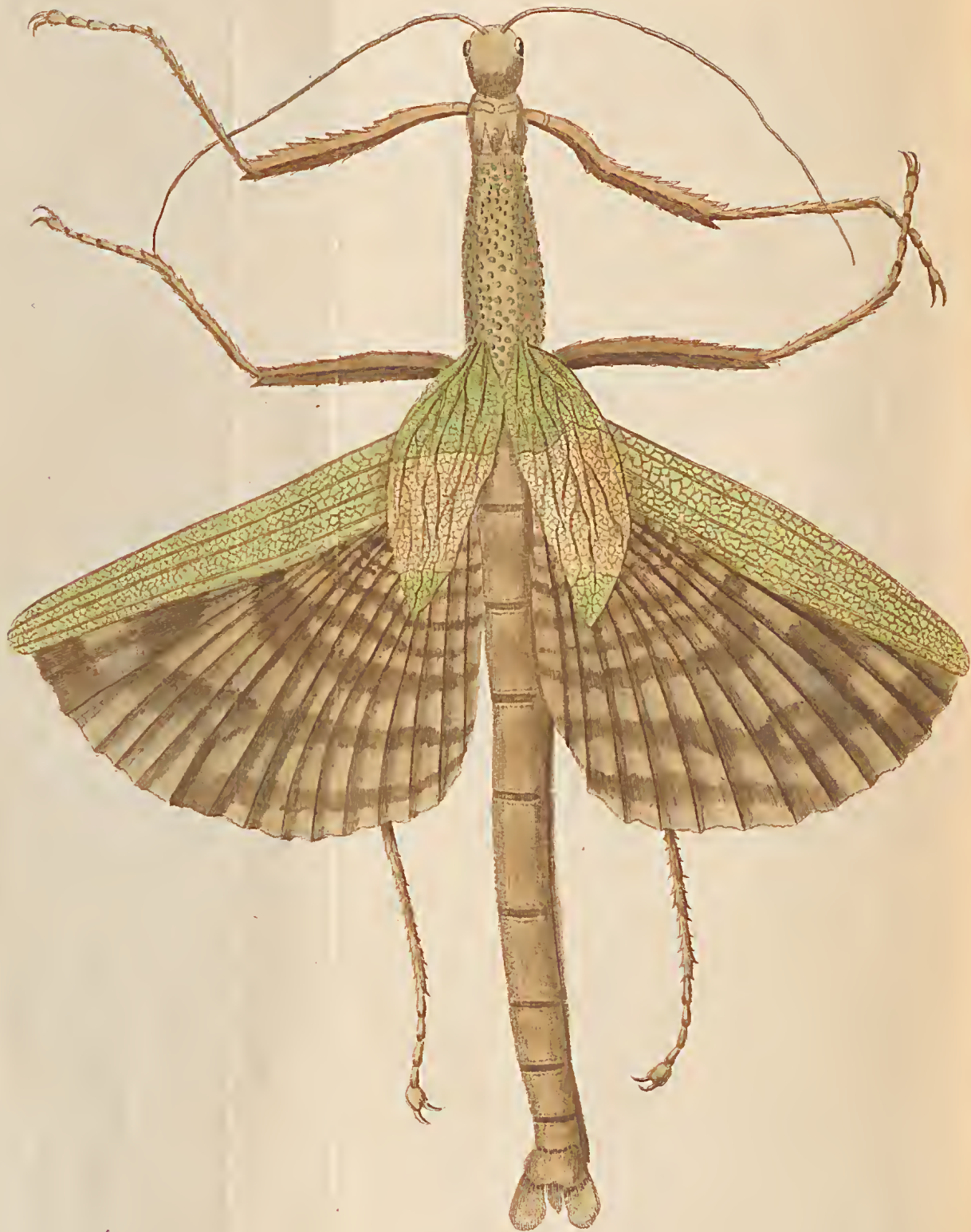
In musæis rarissime conspicitur insectum hoc alatum, plenum,

plenum, et perfectum; larvæ quippe solummodo in Europam advehi solitæ sunt, in queis alarum, ut jam diximus, rudimenta vix ac ne vix conspici possunt. Istiusmodi larva communiter *bacilli ambulantis* nomine cognoscitur.

Singulare aliquid huic insecto est, quodque perpauca aliis sui generis contingit, alas nempe non tantum thecis externis, sed et elytris quasi secundariis muniri, quæ tamen connexa videntur, quæque ipsas fortasse alas ab injuriis securiores reddant.

Mirum et rarum hoc insectum Insulam Amboynam inhabitat; ipsumque specimen unde depingitur hæc nostræ figura, in Musæo Leveriano tam belle exsiccatum, ut nihil sit perfectius, asservatur,





THE  
GREAT MANTIS.



*GENERIC CHARACTER.*

*Head* unsteady: Mouth armed with jaws, and furnished with palpi.

*Antennæ* setaceous.

*Wings* four, membranaceous, convoluted: the lower ones plicated.

*Feet anterior* compressed, ferrated beneath, armed with a solitary claw and lateral jointed process; *posterior* four, smooth, formed for walking.

*Thorax* linear, elongated, and narrowed.

*SPECIFIC CHARACTER.*

MANTIS with roundish rough thorax, very short elytra, and spiny feet.

---

Imagination can hardly figure to itself a creature of a more singular appearance than this insect; and had we only received the accounts of authors, without having seen the animal itself, we might be inclined to question the truth of its existence. In insects of this tribe the animal in its incomplete state, or that which is analogous to the caterpillar-state in the butterfly-tribe, differs not much from the appearance of the insect

insect

fect in its complete form, except in not being furnished with wings.

This creature is very rarely met with in collections in its complete or winged form; being generally seen in the less advanced growth before-mentioned, in which the rudiments of the wings are but just visible. In that imperfect state it has commonly been described under the title of the walking stick.

A most singular circumstance in this insect, (and which takes place in but very few others of the genus) is, that, exclusive of the elytra, or wing cases, there is an additional pair, which may be supposed to serve as a farther guard in securing the wings themselves: this secondary pair however seem to be connate with the wings themselves, so as to make a part of them.

This most curious and uncommon insect is a native of the Island of Amboyna, and the specimen from which the figure was taken, is now in the highest preservation in the Leverian Museum.